



SALADO

quarry

Natural Stone



■ Sonoma Blend
Random 4,” 6,” 8,” 10”

Sonoma

Saw cut on top and bottom to specific heights with split face and random lengths.



Sonoma Sample Panels..... 2
White 3
Gold 4
Tan..... 4
Cave 5
Blend..... 6
Autumn..... 7
Cream 7
Archaic 8
Matera..... 8
Red..... 9

Tuscany

Rustic rectangles split on all sides; random heights and lengths.



Tuscany Sample Panels..... 10
White 11
Red..... 12
Hickory..... 12
Cream 13
Autumn..... 13

Ledgestone

Narrow profile random rectangles; Sonoma: Saw Cut top and bottom with split face 1 ½” and 2.”
Tuscany: Rustic rectangles split on all sides 1” to 3.”



Tuscany Hickory 14
Ledgestone Sample Panels 15

Chateau

Random shapes and sizes; Mosaic/Flagstone pattern



Chateau Sample Panels 16
Gold 17
Brown 18
White 18
Hickory 19
Autumn..... 20

Landscaping with
Natural Stone 21-23

Commercial Uses 24-25

Stone Specifications..... 26

Installation 27

Contents

CONTACT

Phone: 254.793.3355
Fax: 254.793.0182
Website: saladoquarry.com



Gold



White



Cream



Cave



Concho



Blend



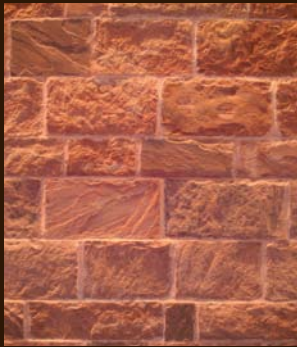
Autumn



Tan



Matera



Red



Archaic



Lueders

SONOMA

Saw cut on top and bottom to specific heights with split face and random lengths. Available in height sizes 2"-16."



Ballinger



© 2010. All images property of Salado Quarry and cannot be reproduced without permission.

Sonoma White ■
Random 4," 6," 8," 10"



■ Sonoma Gold
Random 4," 6," 8," 10"



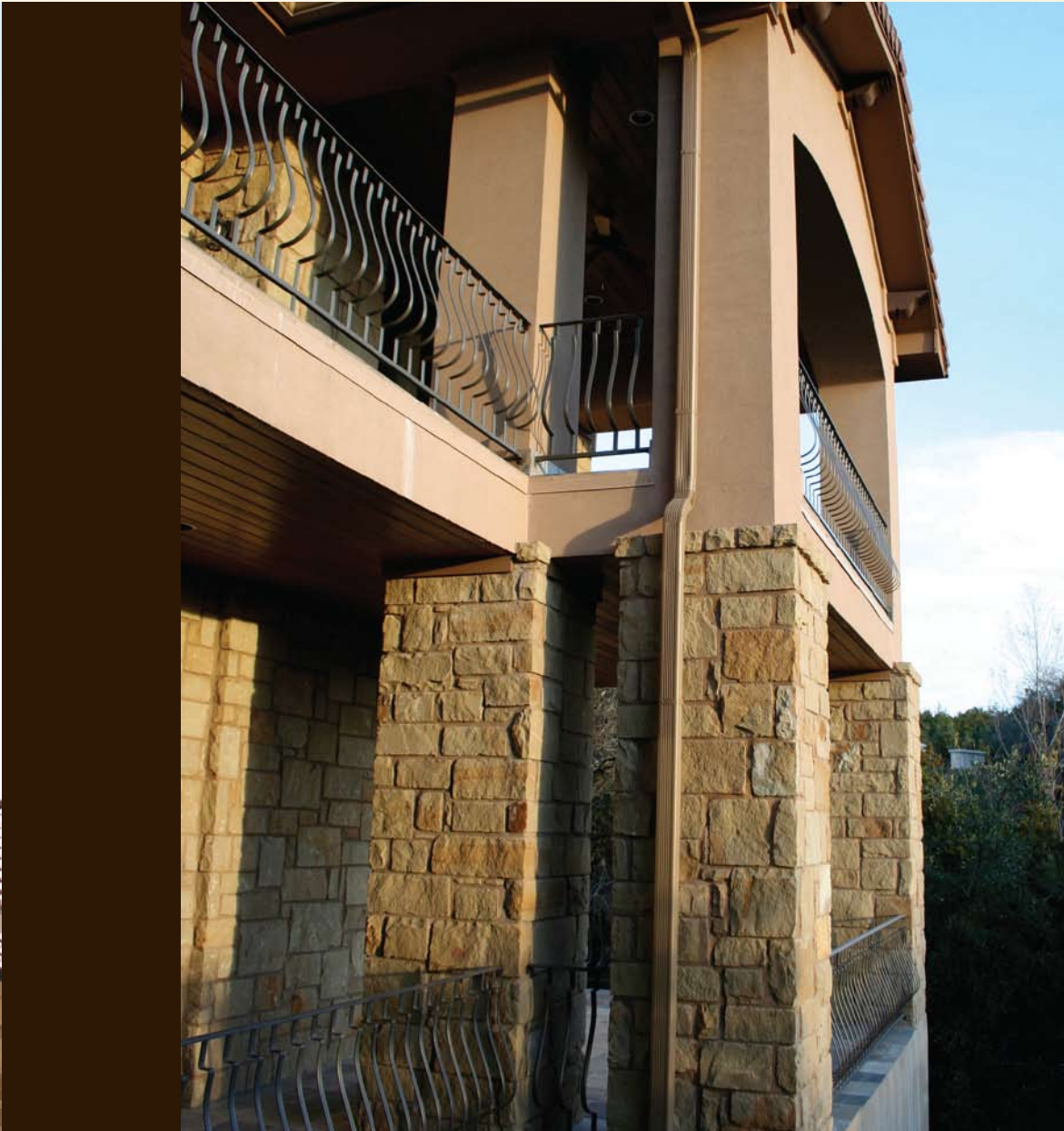
■ Sonoma Tan
Random 4"-12"



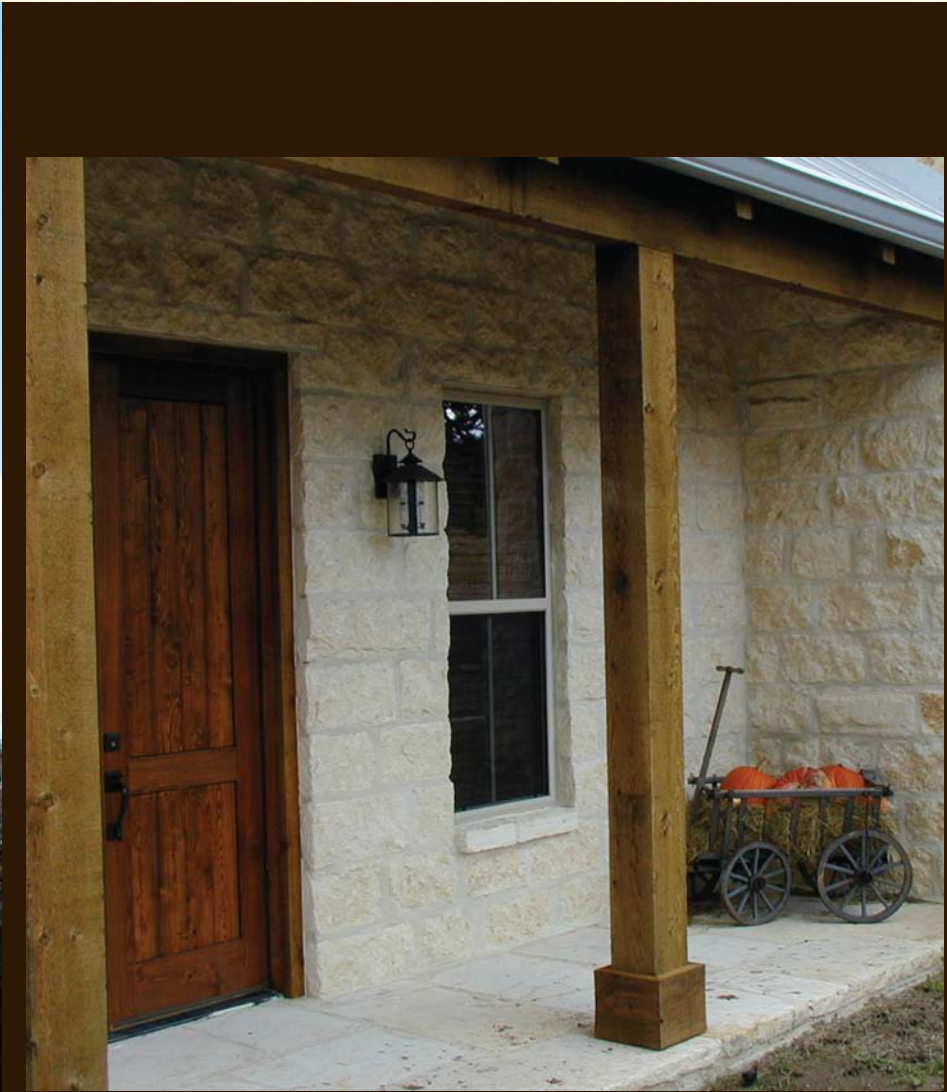
Sonoma Cave ■
Random 4," 6," 8," 10"



■ Sonoma Blend
Random 4," 6," 8," 10"



Sonoma Autumn ■
Random 4"-12"



© 2010. All images property of Salado Quarry and cannot be reproduced without permission.
Sonoma Cream ■
8" Courses

A Closer Look at
Sonoma Archaic
Sonoma Archaic



© 2010. All images property of Salado Quarry and cannot be reproduced without permission.



Gold



Red



Cream



White



Hickory



Autumn

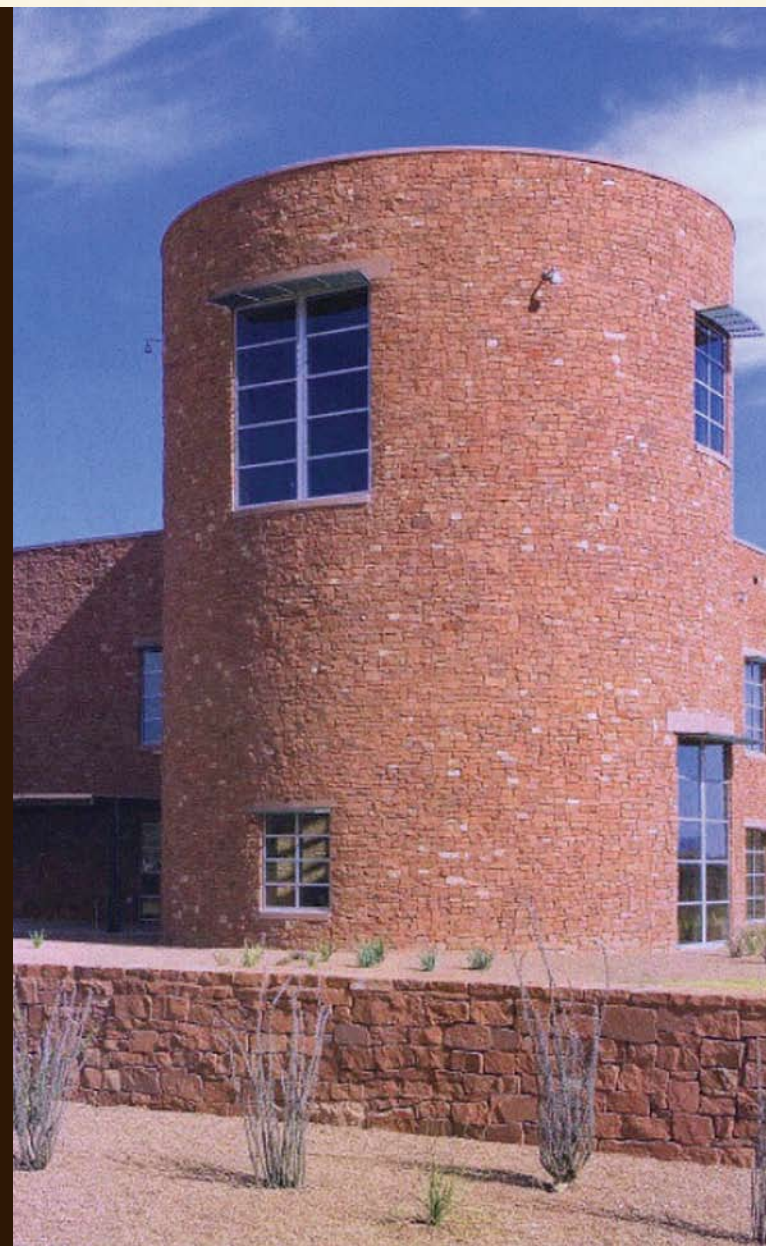
Tuscany
TUSCANY

*Rustic rectangles split on all sides;
random heights and lengths.*



Brown





■ Tuscan Red



■ Tuscan Hickory



Tuscan Cream ■



Tuscan Autumn ■

© 2010. All images property of Salado Quarry and cannot be reproduced without permission.

Ledgestone
LEDGESTONE

Narrow profile random rectangles.



SONOMA LEDGESTONE



White



Cream



Gold



Cave



Concho



Ballinger



Lueders



Archaic



Autumn



Matera

TUSCANY LEDGESTONE



Cream



Hickory

Sonoma Ledgestone

Saw cut top and bottom with split face 1½" and 2" White, Cream, Gold, Cave, Concho, Ballinger, and Lueders Sonoma Ledgestone available in 1¼" and 2½." Archaic, Autumn, and Matera Sonoma Ledgestone available in 1¾" to 3."

Tuscany Ledgestone

Rustic rectangles split on all sides 1" to 3" Cream and Hickory Tuscan Ledgestone available in 1¾" to 3."



White



Gold



Red



Autumn



Hickory

CHATEAU

*Random shapes and sizes; Mosaic/
Flagstone pattern.*



Brown



© 2010. All images property of Salado Quarry and cannot be reproduced without permission.



■ Chateau Brown



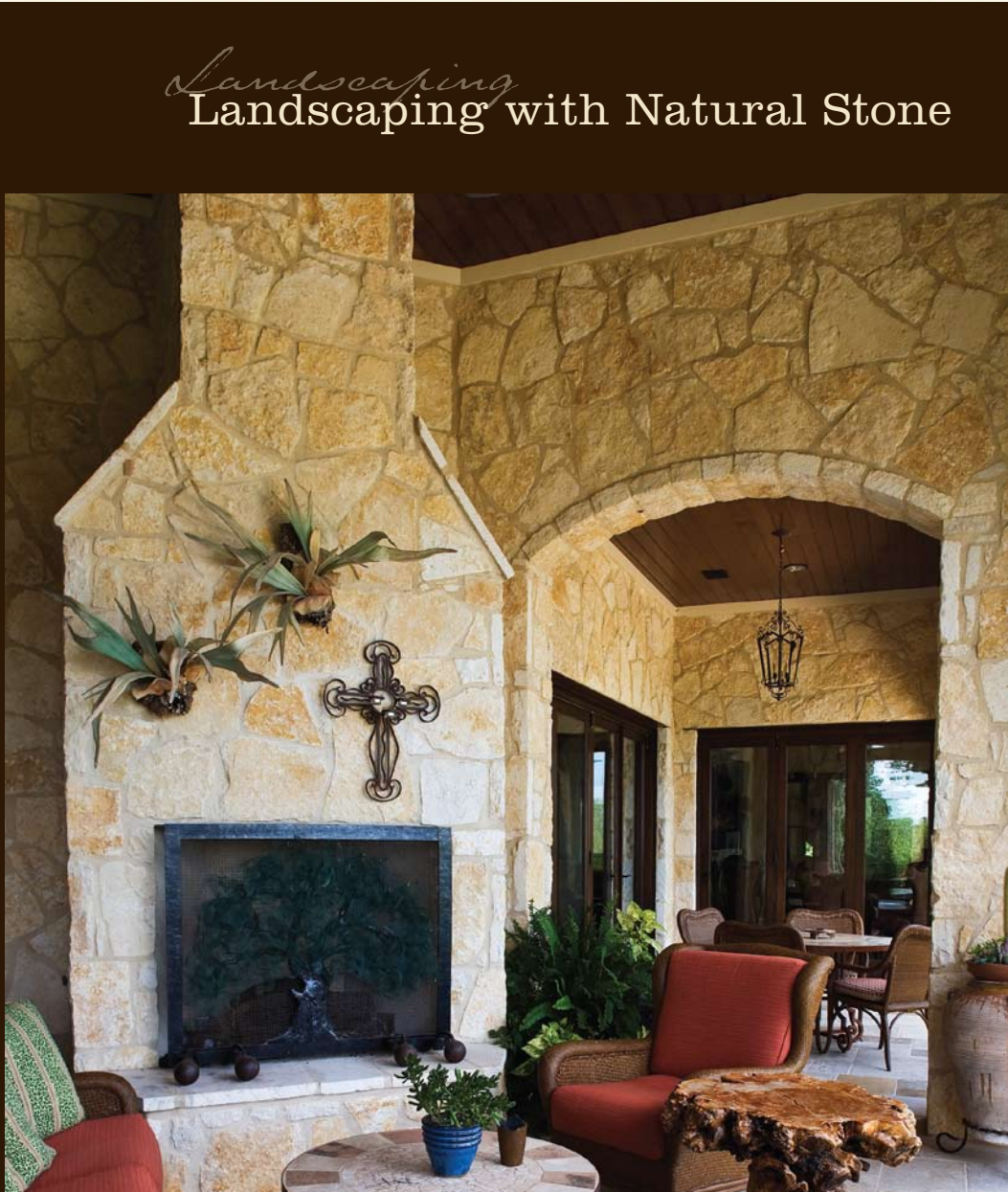
■ Chateau White



Chateau Hickory ■



■ Chateau Autumn



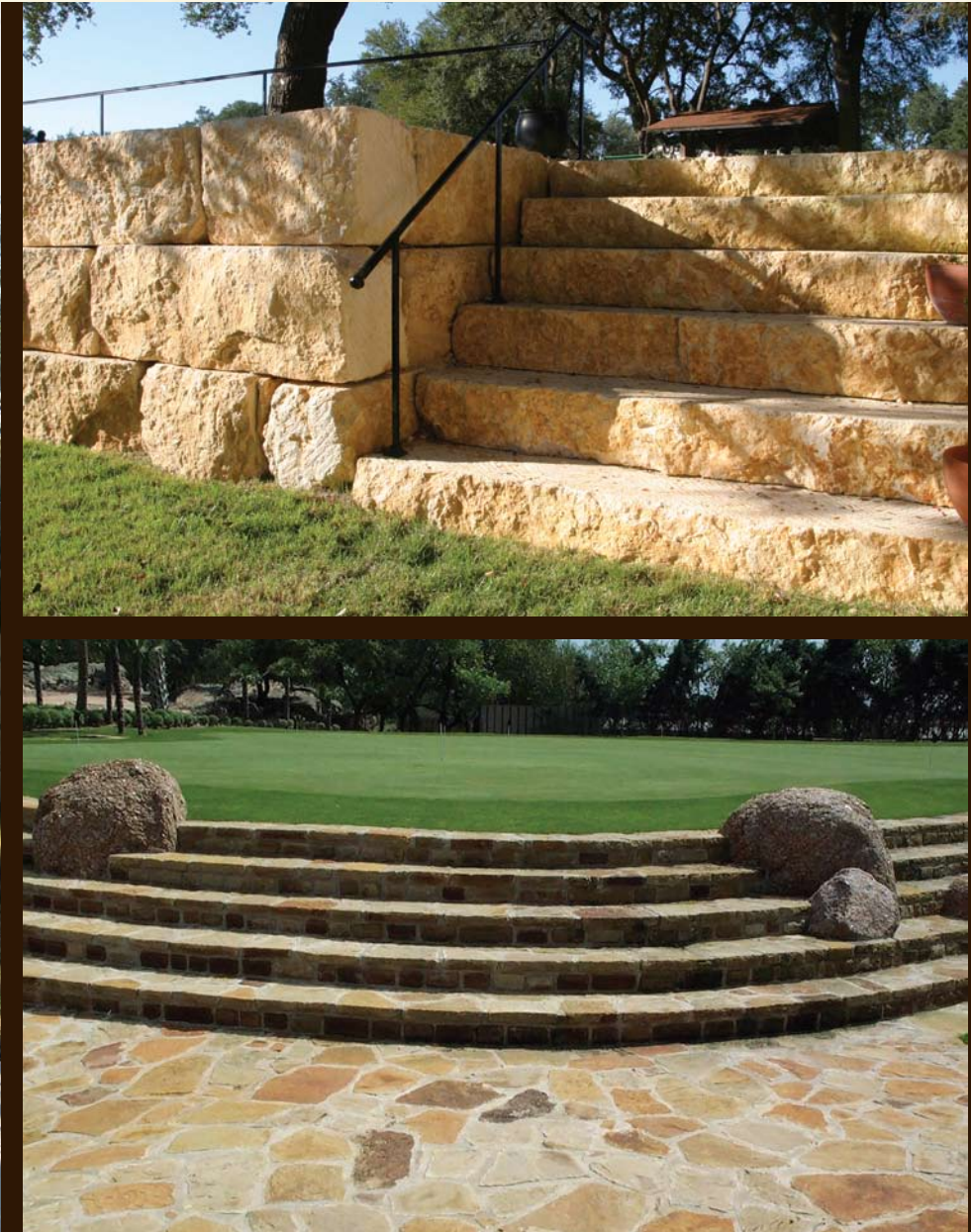
Chateau Gold ■



White Mix ■

■ **LANDSCAPING**

LANDSCAPING ■



Commercial Uses
Commercial Uses for Natural Stone



■ Sonoma Tan



■ Tuscan Hickory



Sonoma Cream (Top)
Sonoma Gold (Bottom) ■



Chateau Hickory ■

© 2010. All images property of Salado Quarry and cannot be reproduced without permission.



■ Sonoma Gold



■ Sonoma White



Cream Wall Caps 2" ■

■ **STONE SPECIFICATIONS**

INSTALLATION ■



Block

Full Size Stone

3”-5” depth, various heights to 16,” random lengths, all styles.



Thin Veneer
Corner

Thin Veneer Corners

1¼” depth, nominal 3” return, various heights to 12,” all styles.



Thin Veneer
Flat

Thin Veneer Flats

1¼” depth, various heights to 12,” all styles.



Salado Quarry stone meets all specifications for Dimensional Stone under ASTM C-568 and C-616.
Please consult a stone professional for the proper, safe and economical use of natural stone.



Salado Quarry’s packaging is unique, durable and stackable.

Installing Thin Stone Veneer

TOOLS & MATERIALS:

- Natural Thin Stone Veneer
- Hammer
- Brick trowel
- Scraper
- Stiff brush
- Flat trowel
- Joint tool
- Grout bag
- Masonry brush
- Sand and cement
- Premixed mortar
- Metal lath
- Stone saw

NOTE:

These are general instructions for applying Natural Thin Stone Veneer. Processes may vary depending on application. We strongly recommend consulting with an installation professional.

SURFACE PREPARATION

Natural Thin Stone Veneer can be applied on nearly any prepared surface, including concrete, plywood, paneling, drywall and even metal.

The surface must be cleaned.

- Painted surfaces must be sandblasted, or otherwise stripped of paint. If all paint is not completely removed, secure a metal lath to the wall, 6” on center.
- For exterior surfaces, install a vapor barrier first, then metal lath.
- For surfaces with frame construction (plywood, drywall or rigid foam), nail metal lath to wall securely, 6” on center. Apply a scratch coat (2 parts washed sand to 1 part Portland cement) to lath. Rake horizontal grooves in the scratch coat. Allow to cure.

APPLICATION

1. Arrange stones to desired fit prior to installation.
2. Mix rich mortar at least 5 minutes until consistency is creamy like cake frosting.
3. Clean veneer surfaces. Wash stone completely, if needed. Slightly dampen backside of clean stone, freeing dust and preventing moisture loss from mortar.
4. Using trowel, apply rich mortar approximately ½” thick to wall.
5. Apply thin coat of rich mortar on backside of stone, evening surface pits and bumps for a stronger bond.
6. Press stone into wall mortar, rotating slightly and forcing some mortar to squeeze out at edges. Remove excess mortar with trowel, joint tool or brush before it sets.
7. Use a grout bag to fill joints. As mortar stiffens, tool to the desired depth and brush off all excess. Do not let any mortar harden on the face of any stone.
8. Remove excess dirt or film using clean water and stiff brush.
9. Allow project to cure for 4 weeks for inside work.



Nail metal lath to wall securely, 6” on center. Using trowel, apply rich mortar approximately ½” thick to wall.



Press stone into wall mortar, rotating slightly and forcing some mortar to squeeze out at edge.



Remove excess mortar with trowel, joint tool or brush before it sets.



Finished Natural Thin Stone Veneer wall.

CAT2.V1/06.10/10K

Salado Partner Information



p 254.793.3355

f 254.793.0182

w saladoquarry.com



Made in the U.S.A.